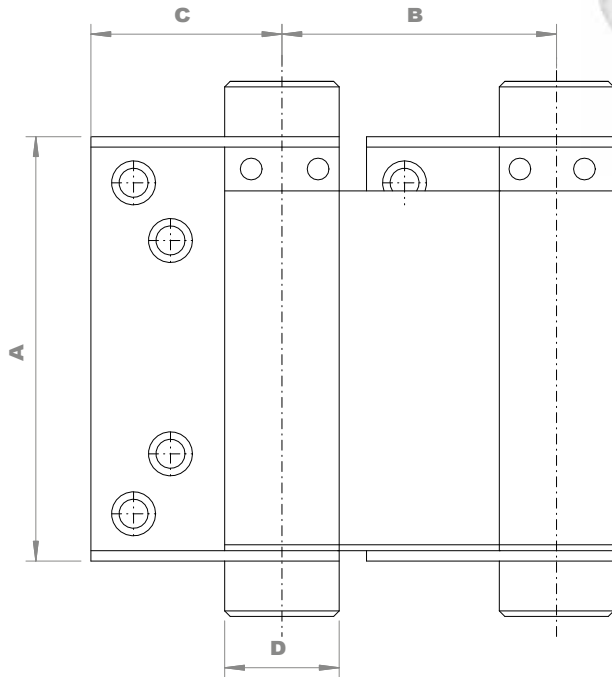


JOUSISARANA HEILURIOVIIN SPRING HINGE FOR SWING DOORS



Materiaali / Material:
FE / CR

| Malli Model | A mm | B mm | C mm | Ø D mm | Oven paksuus Door thickness mm | Oven leveys Door width mm | Oven paino Door weight kg max | Tuote Product |
|----------------|------|------|------|--------|--------------------------------------|---------------------------------|-------------------------------------|--|
| 10/75 | 75 | 50 | 35 | 21 | 28 | 600 | ≤ 10 | 2500101220 2 kpl/pc 2500101222 pari/pair (IP / SSP) |
| 10/100 | 100 | 55 | 36 | 21 | 32 | 700 | ≤ 20 | 2500201220 2 kpl/pc 2500201222 pari/pair (IP / SSP) |
| 10/125 | 125 | 67 | 47 | 23 | 42 | 700 | ≤ 27 | 2500301220 2 kpl/pc 2500301222 pari/pair (IP / SSP) |
| 10/150 | 150 | 70 | 50 | 27 | 42 | 800 | ≤ 40 | 2500401220 2 kpl/pc 2500401222 pari/pair (IP / S |

