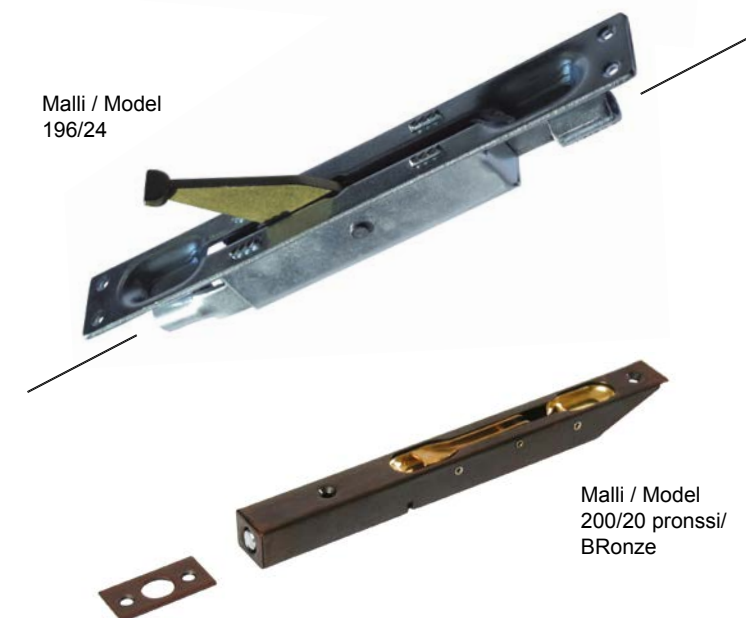


REUNASALPA FLUSH BOLT



Malli / Model
160, 200

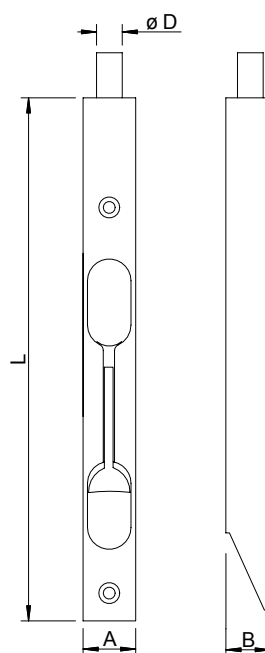


Malli / Model
196/24

Malli / Model
200/20 pronssi/
BRonze

Oven ulkopäättyyn upotettava yksipuolinen salpa vastakappaleella.
Malli 196/24 kaksisuuntainen M8 mm kierretangoille (ei mukana toimituksessa).

Flush bolt to be mounted on the outer rim of the door, with counter plate.
Model 196/24 two-way, for threaded M8 rods (rods not included).



Malli Model	Materiaali Material	L mm	A mm	B mm	Ø D mm	Tuote Product
160	FEZN / Galvanized steel	163	16	13	8	1740051110 1740051112 (IP / SSP)
160	FE/ME / Brass coated steel	163	16	13	8	1740051320 1740051322 (IP / SSP)
200	FE/ZN / Galvanized steel	200	16	13	8	1740201110 1740201112 (IP / SSP)
200	FE/ME / Brass coated steel	200	16	13	8	1740201320 1740201322 (IP / SSP)
200	RST / Stainless steel	200	16	13	8	1740202000
196/24	FE/ZN / Galvanized steel kaksisuuntainen / two-way	196	25	27	8	1744221110
200/20	ST/pronssi / bronzed steel	204	20	17	10	1741501320

